

THE SOFT GIRAFFE

DIRECTOR

Guillaume Vallée

DURATION

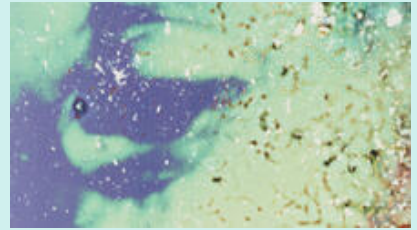
7:30

YEAR

2013

ORIGINAL LANGUAGE

No dialogue

CATEGORYExperimental
Animation**DESCRIPTION**

In order to create an organic and psychedelic imagery by the use of *Un Chien Andalou's* footage as source material, Guillaume Vallée has been playing on the 16mm film emulsion for months using different cameraless techniques. As a result, heavy multiple layered images are being shown as sparkles of decaying and dying memories. With the sound treatment of Jane L. Kasowicz, from the musical pieces that use to be presented with *Un Chien Andalou*, used synthesis sound in order to create a new piece. The soundtrack has been transfered into a magnetic tape in order to manipulate the sound in a physical manner in destroying the actual magnetic tape with magnets and direct interactions.

IMAGE FORMAT

4:3

SOUND

Stereo

SHOOTING FORMAT

16 mm

KEYWORDS

Recording tape, Alteration, Memory, Transformation, Surrealism

THEMES

Art and culture