

IL FAIT GRIS DANS TA TÊTE, TOUT À COUP

DIRECTOR

Guillaume Vallée
Sarah Seené

DURATION

3:04

YEAR

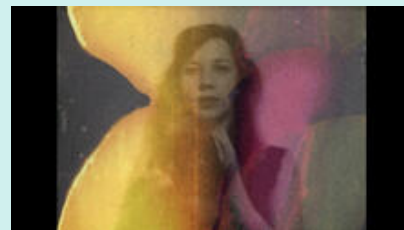
2018

ORIGINAL LANGUAGE

French

CATEGORY

Videopoem
Experimental



DESCRIPTION

Earlier in the year, slam poet and visual artist Sarah Seené was hit by a wave of gray. She laid her pain bare on paper in a personal and poignant text and this led to a collaboration with experimental filmmaker Guillaume Vallée, with whom she made this videopoem.

This work is comprised of a series of self-portraits that were taken with a Polaroid instant camera during filming and shot one by one on Super8. The film was then developed by hand and its emulsion was manipulated. As the photographic images emerge on the screen, a dialogue is established between the two filmic mediums in an analogue mise en abyme. The result is a ghostly, evanescent rendering of a fragile and impalpable emotion.

SOUND

Stereo

SHOOTING FORMAT

Super 8

KEYWORDS

Couple, poetry, crisis, film, photography

THEMES

Private life