

LUMEN

DIRECTOR

Sarah Seené

DURATION

1:41

YEAR

2019

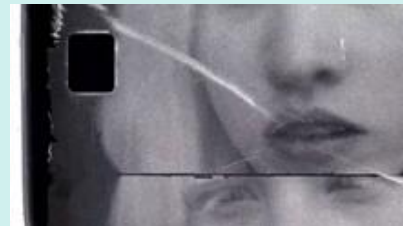
ORIGINAL LANGUAGE

French

CATEGORY

Experimental

Documentary

**DESCRIPTION**

Lumen (meaning light in Latin) is a sensorial film shot in Super 8 that paints a portrait of an adolescent with albinism. The hypersensitivity that this genetic condition engenders and the lack of pigmentation in her skin and eyes lend her an extraordinary aura. This film echoes a series of photographs entitled *Fovea*, which takes as its subject visually impaired young people.

IMAGE FORMAT

4:3

SOUND

Stereo

SHOOTING FORMAT

Super 8

KEYWORDS

Albinism, adolescence, portrait

THEMES

Identity

Private life