

MUCUS (UNCACHEABLE)

DIRECTOR

Antonin De Bemels

DURATION

5:00

YEAR

2019

ORIGINAL LANGUAGE

French

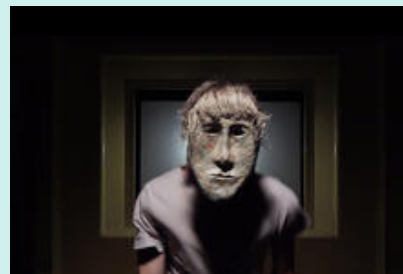
CATEGORY

Video Art

Performance

SERIE

ANTOFOCUS

**DESCRIPTION**

"In computing, a cache (/kæʃ/ (listen) kash,[1] or /ˈkeʃ/ kaysh in AuE[2]) is a hardware or software component that stores data so that future requests for that data can be served faster; the data stored in a cache might be the result of an earlier computation or a copy of data stored elsewhere. A cache hit occurs when the requested data can be found in a cache, while a cache miss occurs when it cannot. Cache hits are served by reading data from the cache, which is faster than recomputing a result or reading from a slower data store; thus, the more requests that can be served from the cache, the faster the system performs." (Wikipedia)

SOUND

Stereo

SHOOTING FORMAT

HD

KEYWORDS

Body, gestures, mask

THEMES

Identity