

PLEXUS (IDLE MODE)

DIRECTOR

Antonin De Bemels

DURATION

20:00

YEAR

2019

ORIGINAL LANGUAGE

French

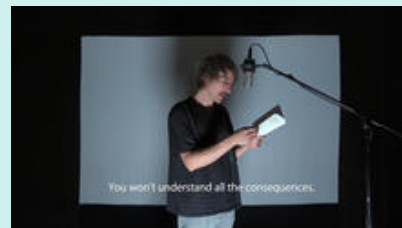
CATEGORY

Video Art

Performance

SERIE

ANTOFOCUS



DESCRIPTION

idle (comparative more idle, superlative most idle)

1. (obsolete) Empty, vacant.

2. Not being used appropriately; not occupied; (of time) with no, no important, or not much activity.

idle hours

My computer hibernates after it has been idle for 30 minutes.

3. Not engaged in any occupation or employment; unemployed; inactive; doing nothing in particular.

idle workmen

4. Averse to work, labor or employment; lazy; slothful.

an idle fellow

5. Of no importance; useless; worthless; vain; trifling; thoughtless; silly.

an idle story; idle talk; idle rumor

6. (obsolete) Light-headed; foolish.

(Wikipedia)

SOUND

Stereo

SHOOTING FORMAT

HD

KEYWORDS

Body, gestures, emotions

THEMES

Identity