

MECHANICS OF TOUCH

DIRECTOR

Bettina Hoffmann

DURATION

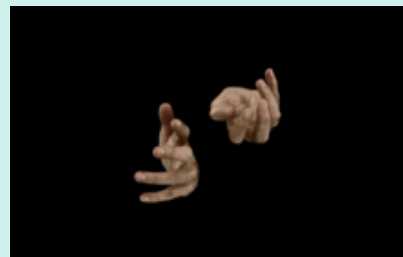
7:30

YEAR

2021

CATEGORY

Experimental

**DESCRIPTION**

Mechanics of Touch depicts a dance performed by hands. Those hands, seemingly detached from the rest of the human body, appear like individual bodies or creatures that push or pull each other, caress, hold tightly, squeeze violently, or penetrate each other, thus visualising human behaviour, such as aggression, protection, sensuality and caring.

IMAGE FORMAT

16:9

SOUND

Stereo

SHOOTING FORMAT

4K

KEYWORDS

Body, exchange, relationship

THEMES

Art and culture