

## THE SOFT GIRAFFE

**DIRECTOR**

Guillaume Vallée

**DURATION**

0:07

**YEAR**

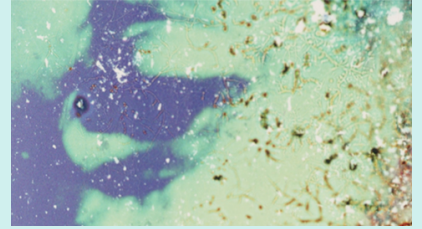
2013

**ORIGINAL LANGUAGE**

No dialogue

**CATEGORY**

Experimental  
Animation



**DESCRIPTION**

In order to create an organic and psychedelic imagery by the use of *Un Chien Andalou's* footage as source material, Guillaume Vallée has been playing on the 16mm film emulsion for months using different cameraless techniques. As a result, heavy multiple layered images are being shown as sparkles of decaying and dying memories. With the sound treatment of Jane L. Kasowicz, from the musical pieces that use to be presented with *Un Chien Andalou*, used synthesis sound in order to create a new piece. The soundtrack has been transferred into a magnetic tape in order to manipulate the sound in a physical manner in destroying the actual magnetic tape with magnets and direct interactions.

**IMAGE FORMAT**

4:3

**SOUND**

Stereo

**SHOOTING FORMAT**

16 mm

---

**KEYWORDS**

Recording tape, Alteration, Memory, Transformation, Surrealism

**THEMES**

Art and culture